

# Supportive Services for Veteran Families (SSVF)

Holly Papineau, MSW, LBSW, CCAP



# Community Action Partnership of North Dakota

CAPND

Established in 1976

Represents the 7 Community Action Agencies (CAAs) in North Dakota

Provides Training & Technical Assistance to ND CAAs





# CAPND Statewide Programs



Affordable  
Connectivity  
Program  
(ACP)



Energy Share



North Dakota  
Rent Help  
(NDRH)



Sportsmen  
Against  
Hunger



Weatherization  
Assistance  
Program



# Regional Map





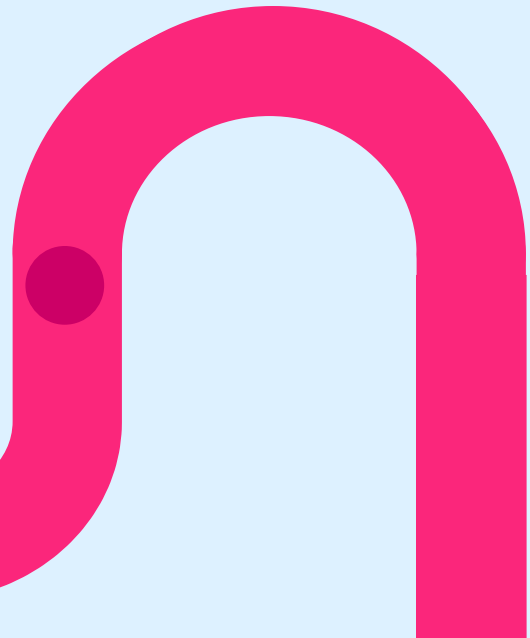
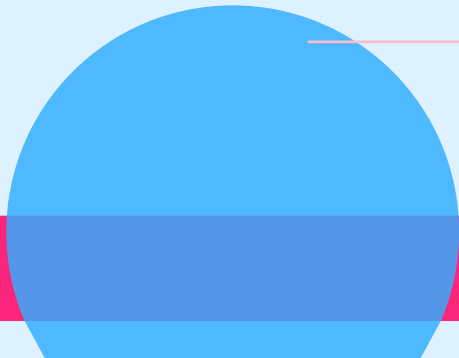
# SSVF in North Dakota

SSVF

SSVF started in North Dakota in 2012

Serves all 53 Counties

Emergency Housing Crisis Response Program





## Purpose of SSVF

- The goal of SSVF is to promote housing stability among very low-income Veteran families who reside in or are transitioning to permanent housing.
- SSVF provides case management and supportive services to prevent homelessness or to rapidly rehouse Veterans and their families who are homeless.





# Temporary Financial Assistance

|  |   |
|--|---|
| Short-to-medium term Rental Assistance   | Utility Assistance (heat, electricity, water, sewer, garbage, internet) |
| Security Deposit   | Utility Deposit   |
| Moving Costs (U-Haul rental, storage unit, moving company)   | Emergency Housing Assistance (Hotel stay – 60-day limit)                |
| General Housing Stability Assistance (application fees, documentation fees, mattresses, kitchen items, and more) | Transportation Assistance (gas, bus passes, car repairs)                |
| Short-term childcare assistance  | Tenant Incentives (items for Veterans moving into a new unit)           |
| Landlord Incentives (funds for landlords willing to rent to hard-to-house Veteran households)                    |   |





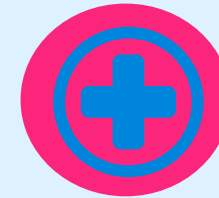
# Services SSVF Offers

## Legal Services



SSVF partners with Lamb Law LLC out of Grand Forks. Lamb Law assists SSVF Veteran households with a variety of services including legal advice, and representation.

## Healthcare Navigation



SSVF has an in-house Healthcare Navigator in Jamestown. He assists SSVF Veteran households with navigating complicated healthcare systems, including the VA, and helps them apply for SSI, SSDI, and Social Security Retirement.



# SSVF Eligibility

Client household must be:

1. An eligible Veteran
2. Below 80% AMI
3. Homeless or at risk of homelessness



1

## Eligibility: Veteran Status

### “Veteran”

For purposes of SSVF, a person who served in the active military, naval, or air service, regardless of length of service, and who separated from the military with a discharge status other than dishonorable or bad conduct – general court martial.

### “Family/ Household”

All persons who together present for services and identify themselves as being part of the same household.

**2**

## Eligibility: Income Status

- Annual Gross Household income < 80% Area Median Income (AMI)

FY 2023 Income Limits Summary

| FY 2023<br>Income<br>Limit Area | Median Family Income<br><a href="#">Click for More Detail</a> | FY 2023 Income Limit<br>Category  | Persons in Family |        |        |               |        |        |         |         |
|---------------------------------|---|---|-------------------|--------|--------|---------------|--------|--------|---------|---------|
|                                 |   |   | 1                 | 2      | 3      | 4             | 5      | 6      | 7       | 8       |
| Fargo,<br>ND-MN<br>MSA          | \$104,100   | Very Low (50%) Income<br>Limits (\$)<br><a href="#">Click for More Detail</a> | 36,450            | 41,650 | 46,850 | <b>52,050</b> | 56,250 | 60,400 | 64,550  | 68,750  |
|                                 |   | Extremely Low Income<br>Limits (\$)*<br><a href="#">Click for More Detail</a> | 21,900            | 25,000 | 28,150 | <b>31,250</b> | 35,140 | 40,280 | 45,420  | 50,560  |
|                                 |   | Low (80%) Income Limits<br>(\$)<br><a href="#">Click for More Detail</a>      | 58,350            | 66,650 | 75,000 | <b>83,300</b> | 90,000 | 96,650 | 103,300 | 110,000 |

NOTE: **Cass County** is part of the **Fargo, ND-MN MSA**, so all information presented here applies to all of the Fargo, ND-MN MSA.



3

## Eligibility: Housing Status

Are they  
homeless?

- Sleeping in a place not meant for habitation.
- Staying in a shelter or transitional housing.
- Sleeping at a hotel paid for by a charitable organization.
- Leaving an institution where he/she has been at for less than 90 days AND were homeless prior to entering the institution.

Are they at risk  
of  
homelessness?

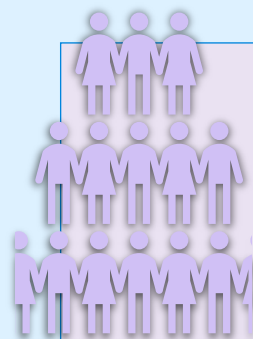
- Would become homeless in the next 30 days **“But For”** SSVF Assistance.
- Rental
- Doubled-Up
- Hotel paid for by a friend, family member, or themselves.



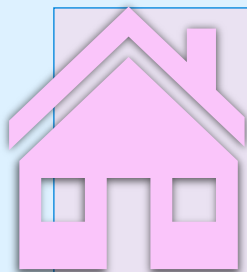
# National Statistics



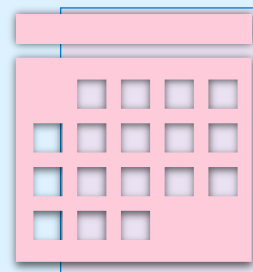
On a single night in January 2020, HUD estimates that 37,252 Veterans experienced homelessness in the U.S., a **decrease** of nearly half **(49%)** since January 2010.



1,137,626 people have been served by SSVF since 2012.



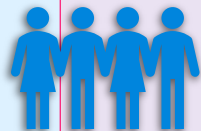
For FY21, 75% of enrolled households had successfully maintained/obtained permanent housing.



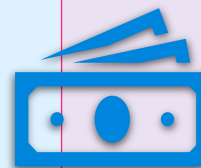
Average length of enrollment in SSVF: 182 days



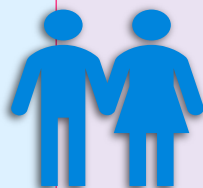
# North Dakota Statistics



459 people or 281  
households  
served



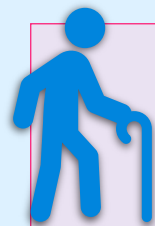
\$648,818.54  
spent



89% of the Veterans  
served were male –  
11% were women



124 out of 193 (64%)  
were successfully  
placed into permanent  
housing



77% of the Veterans  
served were disabled

10/1/2022 – 9/1/2023

# Contact Information

1

Community Action Partnership – Williston Region  
120 Washington Ave, Williston, ND 58801  
701-572-8191

Divide, McKenzie, & Williams Counties

2

Community Action Partnership – Minot Region  
2020 8<sup>th</sup> Ave SE, Minot, ND 58701  
701-839-7221

Bottineau, Burke, McHenry, Mountrail, Pierce,  
Renville, & Ward Counties

3&4

Red River Valley Community Action  
4212 Gateway Drive, Grand Forks, ND 58203  
701-746-5431

Benson, Cavalier, Eddy, Grand Forks, Nelson,  
Pembina, Ramsey, Rolette, Towner, & Walsh  
Counties

5&6

Southeastern North Dakota Community Action  
3233 South University Drive, ND 58104  
701-232-2452

Barnes, Cass, Dickey, Foster, Griggs, LaMoure,  
Logan, McIntosh, Ransom, Richland, Sargent, Steele,  
Stutsman, Traill, & Wells Counties

7

Community Action Program – Bismarck Region  
2105 Lee Ave, Bismarck, ND 58504  
701-258-2240

Burleigh, Emmons, Grant, Kidder, McLean, Mercer,  
Morton, Oliver, Sheridan, & Sioux Counties

8

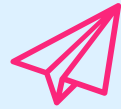
Community Action Partnership – Dickinson  
Region 202 E Villard, Dickinson, ND 58601  
701-227-0131

Adams, Billings, Bowman, Dunn, Golden Valley,  
Hettinger, Slope, & Stark Counties



# Thank you!

Holly Papineau, LBSW, MSW, CCAP



[holly@capnd.org](mailto:holly@capnd.org)



[capnd.org](http://capnd.org)



701-232-2452 ext. 167



3233 S. University Dr.  
Fargo, ND 58104